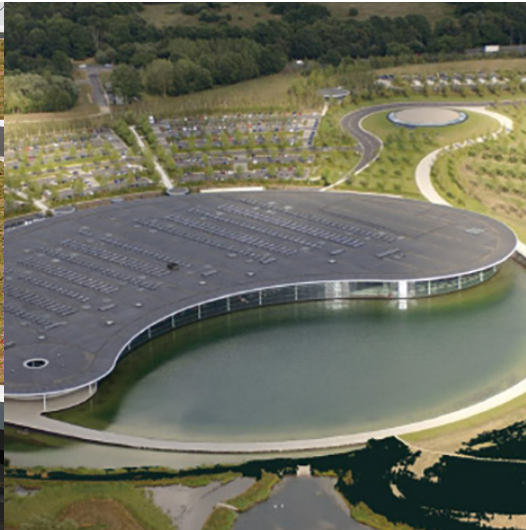
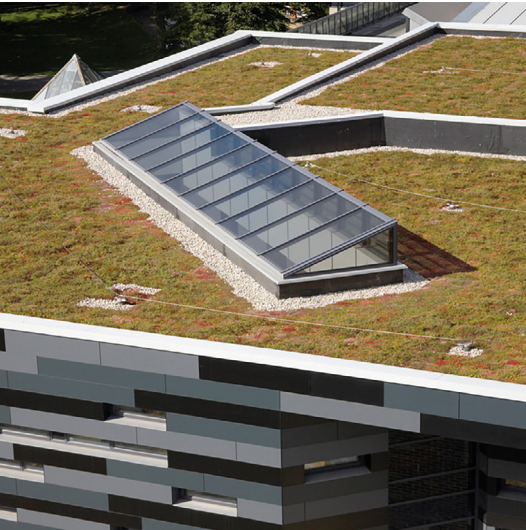


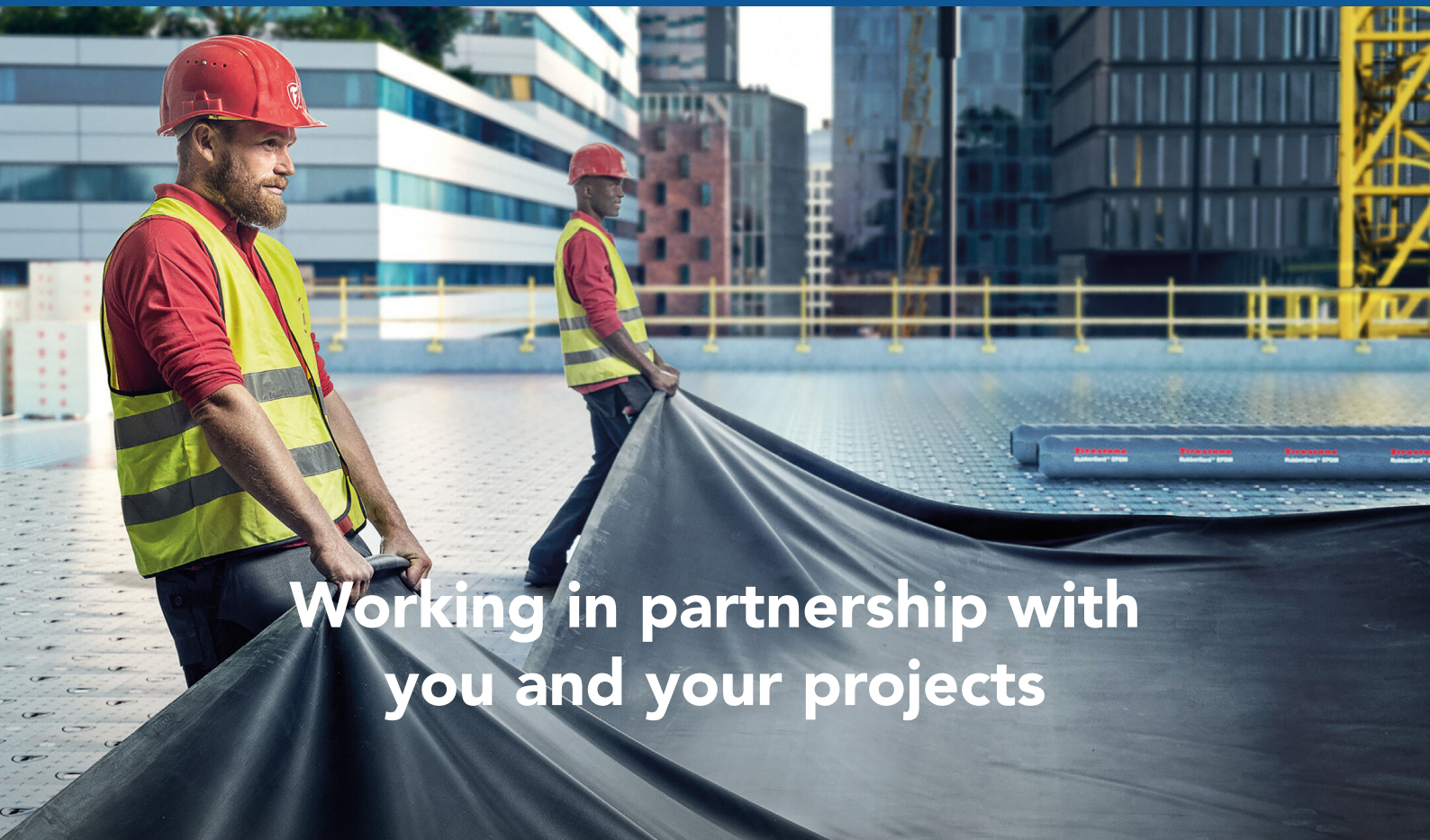
# PermaRoofUK<sup>®</sup>

Permanent solutions to age-old problems

Commercial



## Permaroof Registered Installer Scheme



Working in partnership with  
you and your projects

# Our Expertise

Permaroof UK Ltd offer a design specification service for our Permaroof Registered Installers using proven and durable flat roofing solutions. Whether you're in the early stages of specifying your commercial roofing project or you're ready to get started, **Permaroof can help you to find the best solutions for your needs.**

As a leading supplier for commercial roofing, we have experience with roofing projects of all sizes and can help our clients with a range of systems from newbuild construction to repairs and complete roof refurbishment.

Our teams are experienced in the design and specification of commercial roofing systems and our approach to customer service is award-winning. We work closely with our Permaroof Registered Installers to ensure your roofing solution fits your needs perfectly, talk to us today.



**Skylights available from our online store**

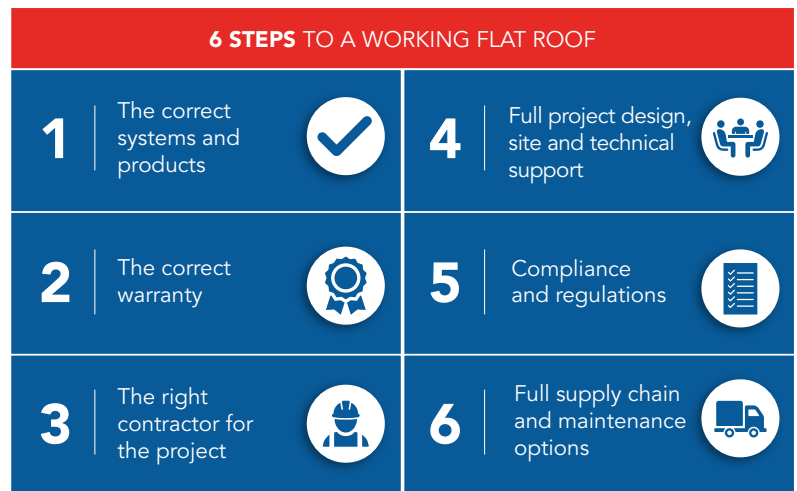


**Our experienced team are happy to help you find the right solutions and products for your project.**

## 6 Steps to a Working Flat Roof

Permaroof Commercial understand that with so many waterproofing options and systems available to you, **finding the correct flat roofing solution and compliance can be a bit of a minefield.**

As today's design concepts and boundaries are pushed even further, getting the correct design right the first time is imperative. That's why **Permaroof Commercial is in partnership with leading suppliers so we can offer you the opportunity to get support and help to design the correct solution for your project from inception right through to completion.**



## Full Specifications Support to Include:

- ✓ On site meetings to ascertain direction of project
- ✓ Full ELEVATE technical assistance
- ✓ Roof inspections, surveys and reports
- ✓ ELEVATE approved installer network
- ✓ Wind-up lift calculations
- ✓ Core testing with reports
- ✓ Design support and advice
- ✓ Roof sign offs for warranties
- ✓ Cut to falls insulation
- ✓ NBS specifications

# Permaroof Registered Installer – Training and Benefits

For Permaroof, the reputation of the roofing industry – and flat roofing, in particular – **has always been inconsistent.**

Design Options

Waterproofing Options

Correct Specifications

Compliance Assistance

Built up Roofing Options

Greens Roofs

Range of Solutions

Insulation Options

Roof Surveys and Reports

Technical Assistance

Tapered Schemes

Historically, the industry has been marred by non-professionals offering low budget and quick fixes to unaware consumers hence at Permaroof **we fully support and train our registered installers** for full peace of mind and correct system install.

Our national training centre based in Alfreton allows us to host regular Permaroof Registered Installer training seminars where contractors come and are trained on our range of flat roofing solutions offering warranties backed by technical and design support.

Our in-house technical trainers supported by our suppliers offer a comprehensive practical training day and once trained become part of the national network of Permaroof Registered Installers have the opportunity to offer warranties from 10 – 25 years.

Full technical support and design assistance is also provided by Permaroof and our world-renowned manufacturers and suppliers.

As today's design concepts and boundaries are pushed even further to get the correct design right the first time is imperative and that's why Permaroof UK in partnership with leading suppliers offer our Permaroof Registered Installers the opportunity to support you and help design the correct solution for your project from inception right through to completion.

With full in-house and external support offering you the opportunity to know that no matter what the request Permaroof have a solution and our Permaroof Registered Installers will always get the answer.



Become part of the national network of registered installers



Opportunity to offer a range of guarantees (once PRI registered)



Full Permaroof in-house and external technical support



Full project specific specification support

## We are always investing in training



Whether you're in the early stages of specifying your commercial roofing project or you're ready to get started, Permaroof can help you to find the best solutions for your requirements once you have completed your Permaroof Registered Installer training.

Our national network of Permaroof Registered Installers already enjoys a host of commercial flat roofing specification opportunities and a full range of systems including:

- ELEVATE RubberGard EPDM systems offering a 20 year BBA backed warranty
- Permaroof 500 Liquid waterproofing offering 25 year warranty
- RubberTop Premium Fleece backed EPDM system offering a 20 year warranty
- Range of Green Roof systems from built-up to modular and more
- Full range on roof lights from our own roof light company including bespoke, smoke, commercial and residential options
- Insulation systems including tapered schemes
- Full site support to consist of full roof surveys including roof condition reports, specifications, core and adhesion testing by our in-house design and technical teams

## Why Permaroof Commercial?



### Professional Team

PermaRoofUK Commercial offers support from the start of your project. Experienced and professional, we help get the most from your systems. The right advice, high quality products and installation support.



### Installation Support

PermaRoofUK Commercial can help to ensure that all our systems are installed to exceptionally high standards through both its nationwide network of EPDM installers and our close relationship with ELEVATE technical services.



### Expert Advice

Knowledge and experience ensure expert advice, unique to our clients' needs. Let us find the best commercial system for your premises, whether you're an architect, property owner or a commercial construction business.



### Tailored Solutions

PermaRoofUK Commercial brings a wide range of innovative roofing and construction products, services and bespoke support to your projects, large or small. Talk to us about your commercial roofing or building project.

