



**Permaroof UK Ltd offer a design specification service of commercial roofing using the proven and durable Flat Roofing solutions.**

Whether you're in the early stages of specifying your commercial roofing project or you're ready to get started, Permaroof can help you to find the best solutions for your needs.

Permaroof UK understand that with so many waterproofing options and systems available to you the specifier that finding the correct flat roofing solution and compliance can be a bit of a minefield.

As todays design concepts and boundaries are pushed even further to get the correct design right the first time is imperative and that's why Permaroof UK in partnership with leading suppliers offer the specifier the opportunity to support you and help design the correct solution for your project from inception right through to completion.

With full in-house and external support offering you the opportunity to know that no matter what the request **Permaroof have a solution.**

Design Options

Waterproofing Options

Correct Specifications

Compliance Assistance

Built up Roofing Options

Greens Roofs

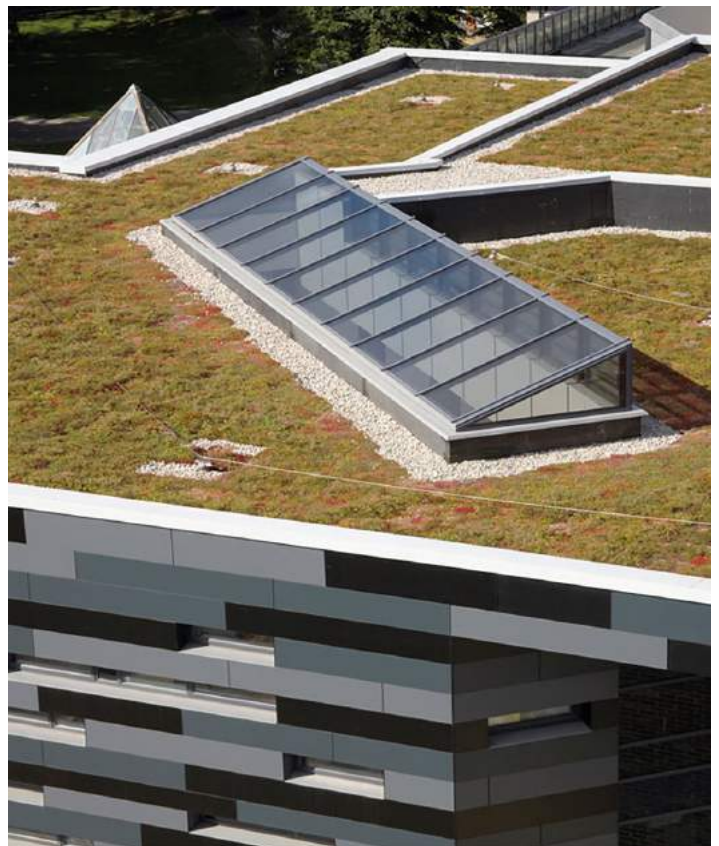
Range of Solutions

Insulation Options

Roof Surveys and Reports

Technical Assistance

Tapered Schemes





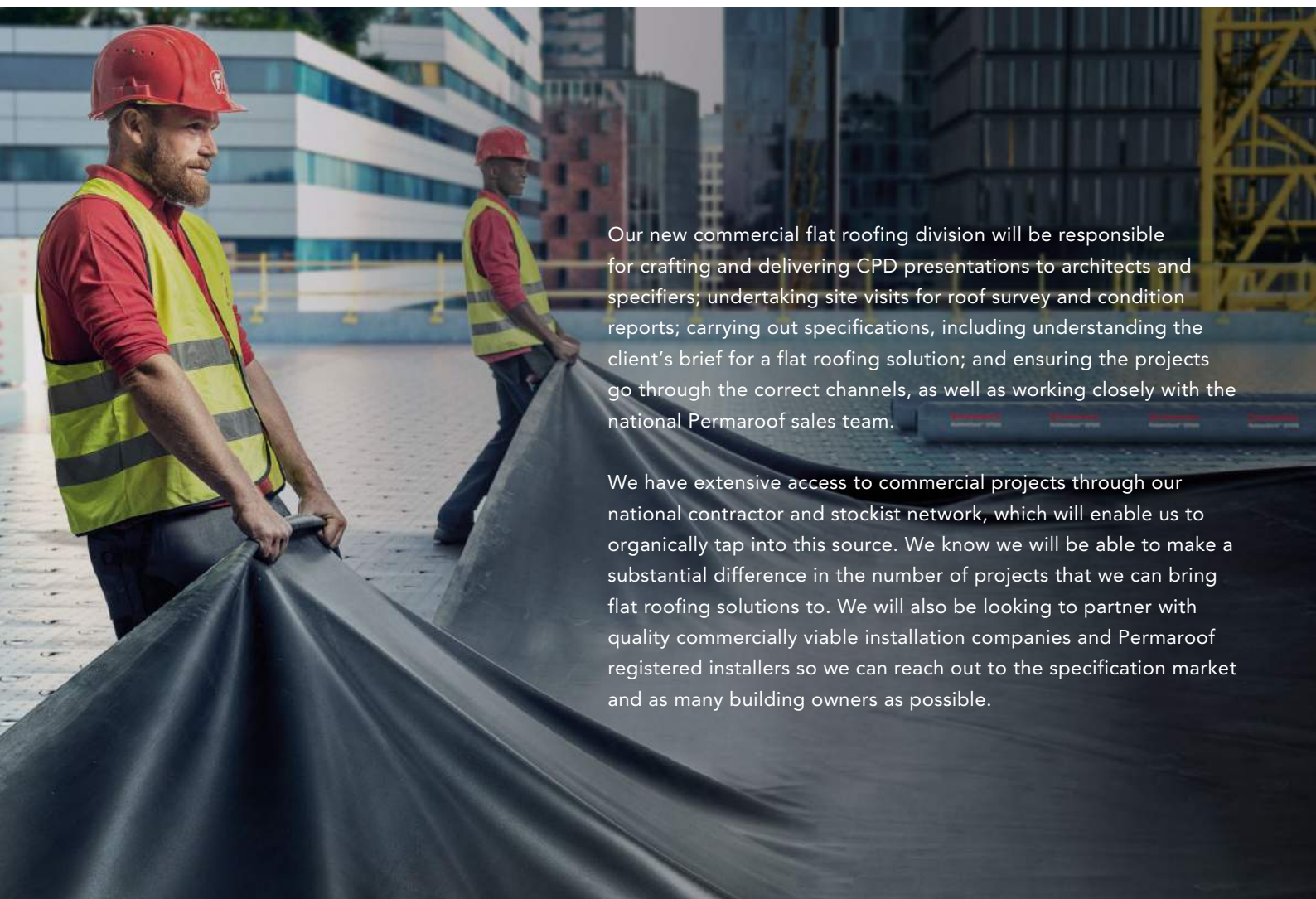
During our time specialising in domestic flat roofing projects, we've gained unrivalled expertise of the industry. And after hitting our **20 year old company** milestone, we wanted to really step up our game.

So, the next logical step was to use our knowledge and move into the commercial sector – further increasing our portfolio of offering long-term solutions to age-old problems.

It is now our vision to become a leading commercial flat roofing supplier within just two years.

We're obviously not new to flat roofing, but residential solutions and commercial flat roofing solutions are two very different animals.

Because of this, we've recruited an experienced national commercial sales manager, who will lead our new commercial flat roofing division and work hand-in-hand with the flat roofing industry standard like Firestone's technical team, ensuring the reputation, solutions and standards remain and accountable at all times.



Our new commercial flat roofing division will be responsible for crafting and delivering CPD presentations to architects and specifiers; undertaking site visits for roof survey and condition reports; carrying out specifications, including understanding the client's brief for a flat roofing solution; and ensuring the projects go through the correct channels, as well as working closely with the national Permaroof sales team.

We have extensive access to commercial projects through our national contractor and stockist network, which will enable us to organically tap into this source. We know we will be able to make a substantial difference in the number of projects that we can bring flat roofing solutions to. We will also be looking to partner with quality commercially viable installation companies and Permaroof registered installers so we can reach out to the specification market and as many building owners as possible.

# Firestone RubberGard



Firestone RubberGard is a high performing synthetic flat roof membrane that has an **expected lifespan of more than 50 years**.

The system offers a unique combination of features including superior weatherability and durability, low life-cycle cost, and high flexibility and elongation.

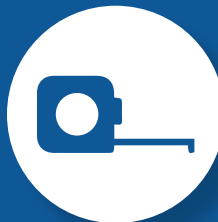
The material is available in standard grade at 1.14mm and premium grade at 1.52mm for heavy duty installations and can be custom cut to size.

This challenge is something we've been waiting for and we can't wait to get started.

Since their introduction, Firestone EPDM membranes – which are backed by more than a century of Firestone experience in rubber technology – have dominated the single-ply roofing market through their proven performance, durability and flexibility over a wide range of building types.



Firestone RubberGard has an expected lifespan of more than 50 years.



Available in sheets up to 15 metres wide and 61 metres long.



The material is available in 1.14mm and 1.52mm and can be custom cut to size.



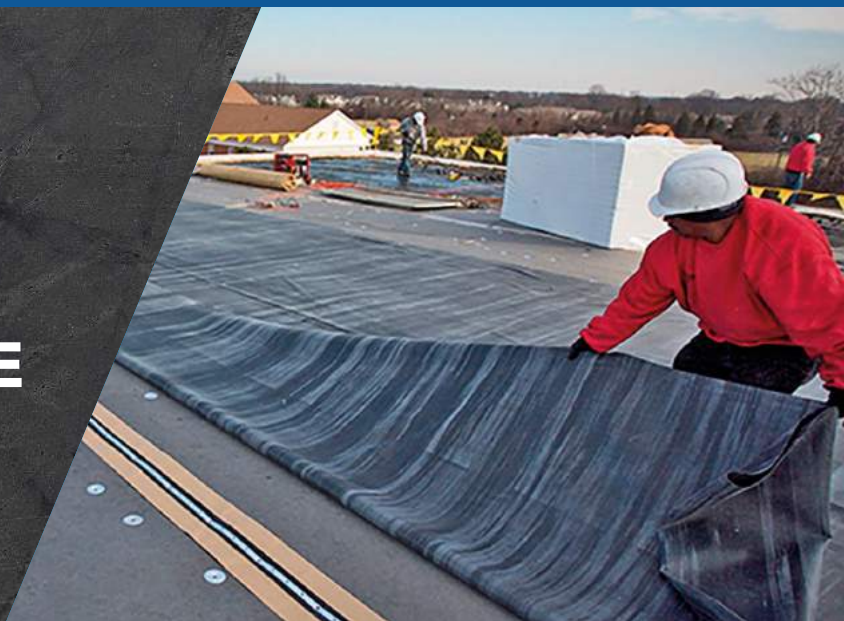
Environmentally friendly.



Installed globally.



**40 SUMMERS, 40 WINTERS. FIRESTONE RUBBERGARD EPDM STILL PERFORMS.**





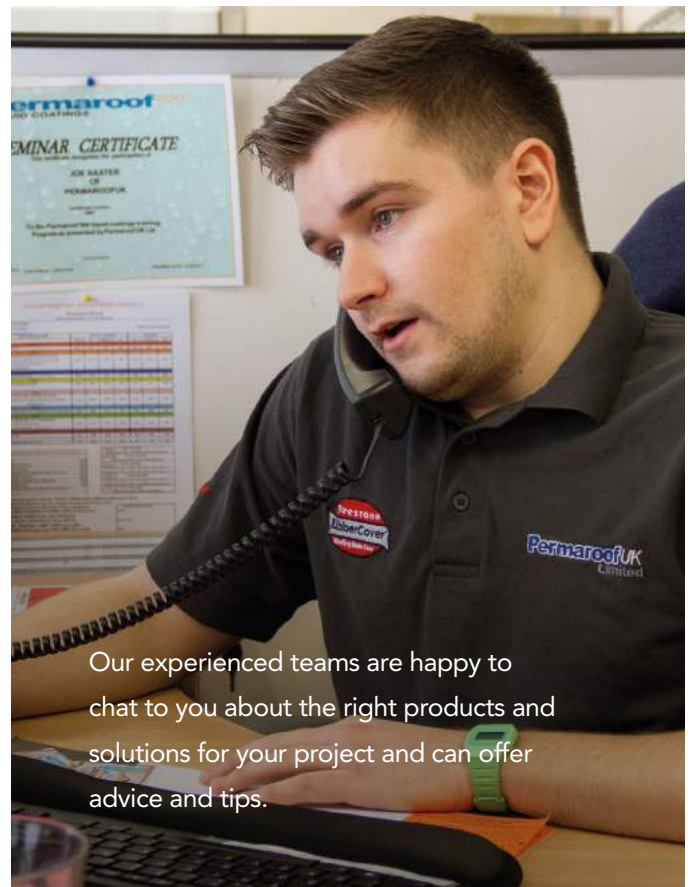
# A Complete Solution



“ After dominating the domestic flat roofing market for the past two decades and following many months in the making, we’re kickstarting 2021 by **expanding** into the commercial sector. ”



The importance of using a full waterproofing system including the correct design and support is critical to avoiding problems and failures down the line.



Our experienced teams are happy to chat to you about the right products and solutions for your project and can offer advice and tips.



## Online CPD Seminar "Flat Roofing Solutions – Finding Your Clients Brief"

We at Permaroof UK in partnership with main suppliers have developed a bespoke Flat Roofing CPD Seminar.

This CPD seminar is suited to Surveyors, Architects and Specifiers working on flat roofing projects interested in gaining a better understanding of various options when specifying your clients brief.

### Points of information and interest during the CPD:

- ✓ Benefits of using the various Roofing systems
- ✓ Understanding different types of Flat Roofs
- ✓ Understanding options available when specifying flat roof systems
- ✓ Green roofing options
- ✓ UK compliance overview
- ✓ Roof surveys, inspections and technical assistance
- ✓ Determine the right flat roofing options that influence choosing the right-fit solutions reducing risks to you and your client.



**Courses are run online on a weekly basis and contributes to your one hour of CPD learning points**

To register your place, simply complete the short booking form on this page and our team will send you joining instructions for the seminar.  
Booking form link: [www.permarroof.co.uk/commercial/cpdbooking](http://www.permarroof.co.uk/commercial/cpdbooking)





# Permaseal 500 Liquid Coatings

The liquid systems entering the market are becoming increasingly popular – mostly due to being aesthetically pleasing and having the flexibility of being able to handle many details on a roof.

We had to source a manufacturer who could give us all these benefits so we could offer our customers the **very best liquid coating**.

The **Permaseal 500** system can be used to waterproof virtually any surface – creating anti-slip surfaces on boats, car parks and stairwells to name but a few.

Due to its flexibility, it's a great addition to your portfolio of products for your clients.

It creates a completely seamless membrane to the surface and can be rainproof within just 30 minutes.

National network of registered installers offering full service installation and a range of warranties.

Full system support for contractors and specifiers via Permaseal Commercial.

## Innovation

This system is a polyurethane liquid membrane producing a highly elastomeric waterproofing solution.

## Flexibility

600% elongation with high resistance to punctures.

## Innovation

Being made in the UK guarantees lower costs with higher quality.

## Highest Standard

Holds an ETA certification for 25 year life expectancy.



## Some of the benefits include:

- ✓ Ease of installation and 600% elongation
- ✓ Highly flexible and high puncture resistant
- ✓ Seamless waterproofing rainproof in 30 minutes
- ✓ Perfect for all types of flat roofing
- ✓ High aesthetics with options for inverted roofs and balconies
- ✓ Range of warranties available
- ✓ National network of installers
- ✓ Can create anti-slip surfaces on boats, car parks and stairwells to name but a few

**Permaseal 500<sup>®</sup>**  
LIQUID COATINGS

# We Host Training Days

For Permaroof, the reputation of the roofing industry – and flat roofing, in particular – has always been inconsistent.

Historically, the industry has been marred by non-professionals offering low budget and quick fixes to unaware consumers hence at Permaroof **we fully support and train our registered installers** for full peace of mind and correct system install.

As we've discovered, untrained construction professionals will, inevitably, lack the knowledge to get the most out of the products they're working with. This ultimately means they are less likely to install a system that's fit for purpose.

Our national training centre based in Alfreton allows us to host weekly contractor training seminars where you contractors come and be trained on our range of flat roofing solutions.

Our in-house technical trainers supported by our suppliers offer a comprehensive practical training day and once trained become part of the national network of Permaroof registered installers and have the opportunity to offer warranties from 10 – 25 years.

Full technical support and design assistance is also provided by Permaroof and our world renowned manufacturers and suppliers.



WE ARE ALWAYS  
**INVESTING IN**  
TRAINING



# SealEco RubberTop Fleece EPDM

As a leading and forward-thinking company, we strive to provide the best solution for your needs and we're always on the lookout for high-quality products we can offer our customers.

We found that **SealEco RubberTop Fleece EPDM** ticked all the boxes – it's a great new addition to the range. In particular, it's especially useful for high foot traffic roofs and industrial gutter lining.

As one of Europe's largest EPDM manufacturers, SealEco has a long history of more than 50 years in rubber production for waterproofing and the protection of all parts of the building envelope, as well as for lining applications.

But we don't just offer a range of waterproofing systems, we also make it easy for you.

Suitable for domestic, commercial and industrial applications, RubberTop Fleece comes with a range of cold-applied tapes and accessories, which make the system simple and fast to install.



SealEco is one of Europe's largest EPDM manufacturers.



Suitable for domestic, commercial and industrial applications.

The fleece-backed EPDM can be obtained in a variety of sizes, allowing you to choose the best option for your project.

We stock roll sizes: 3.4m x 20m; 1.78m x 20m; 1.78m x 60m, and can also supply cut-to-length (1.78m wide by up to 60m all in one piece), leaving minimal to zero waste.

All rolls have an open, non-fleece edge to allow additional widths to be joined on site by means of our trusted tape system.

Our range of tapes, adhesives, sealants and accessories mean that RubberTop Fleece is a complete, quality system designed to meet all your roofing needs.

Take our trusted advice and make sure this is part of your product offering to customers.



We are pleased to announce we have been appointed **sole UK distributors of this fantastic product.**

- An impressive 2.3mm thick membrane
- 160 grams of fleece laminated to the back
- Roll widths of 1.78m and 1.3m
- Roll lengths of 20m and 60m
- Can be sold cut to length
- CE certified
- 20 year membrane warranty



# Green Roofs

Embrace the sustainability trend with green roofs due to their innovative nature, green roofs – one of the fastest growing options for specifiers and contractors who want to boost their sustainability footprint while working on your clients brief – are sometimes thought of as a specialist feature and, therefore, not offered and could easily add them to their list of projects.



Permaroof offer a range of waterproofing solutions with green roof approvals providing **100% WATERPROOFING**



However, if you choose the right materials, it's simple to create an eco-friendly roof.

There are different types of green roofing and the type that is specified will depend on its usage.

Green roofs consist of layers of materials with a base, waterproofing membrane at the bottom, protected from the drainage layers by insulation medium, and a planting layer – typically consisting of ground cover, water-loving plants like sedum and other succulents, moss and grasses – on the top.

The base layer must provide waterproofing across the entire project and must be effectively adhered directly onto the roof deck.

EPDM and liquid membrane is perfect for a long-term living roof, providing 100% waterproofing and carrying a life expectancy of more than 50 years. EPDM systems are installed in a single sheet with no joins, eliminating the vulnerabilities caused by joined membranes.

Once laid, EPDM is reliable enough to protect the flat roof deck beneath the green roof from water ingress.

Because the planting medium absorbs rainfall so effectively, there is often a consistent water presence that seeps through the drainage layers and protective insulation layers before reaching the membrane.

This is where the membrane comes into its own. After investing the time into building and creating a living, or green roofing system, failure of the vital drainage layer could be disastrous.





# The Skylight Company

If it's rooflights you need,  
we have a **huge selection**.

Our acquisition of The Skylight Company back in January 2019 was the perfect fit for us as it not only added a further quality brand to our group, it enabled us to create a one-stop shop.

From flat roof and pitched roof windows to access rooflights, roof lanterns and dome skylights – we now offer probably one of the best ranges in the UK.

We have a dedicated rooflight specialist on our team, ready to take details of your requirements so we can assist in getting the correct specification for your product.

He works closely with the manufacturers so is up-to-date with product offerings and the latest trends.

You will find a range of guides, brochures and how to videos on our website to help ensure your product selection is even easier.

And even if you already buy rooflights from another supplier, give our price beating service a try.

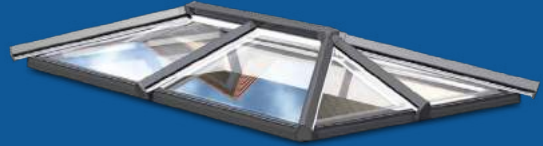
We are extremely competitive, thanks to the sheer volume of products we sell, so we are more than confident we have a great deal for you.

The brands we offer include:

- **Brett Martin**
- **FAKRO**
- **VELUX**
- **Korniche**
- **Whitesales**
- **Eurocell**

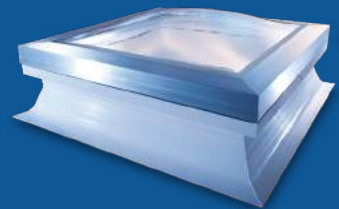
## INTRODUCING OUR NEW **ROOF LANTERNS** 1000 X 1500

**Roof Lanterns** provide an innovative and alternative to aluminium skylights or conservatory roof systems that's a beautifully cost-effective way to add height and space to a room.



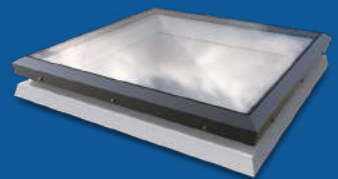
## HUGE RANGE OF **POLYCARBONATE ROOFLIGHTS** 750 X 750 + UPSTAND

Our **Polycarbonate rooflights** deliver the complete design package and make a fantastic addition to any home. They provide fantastic security as well as look sleek and stylish.

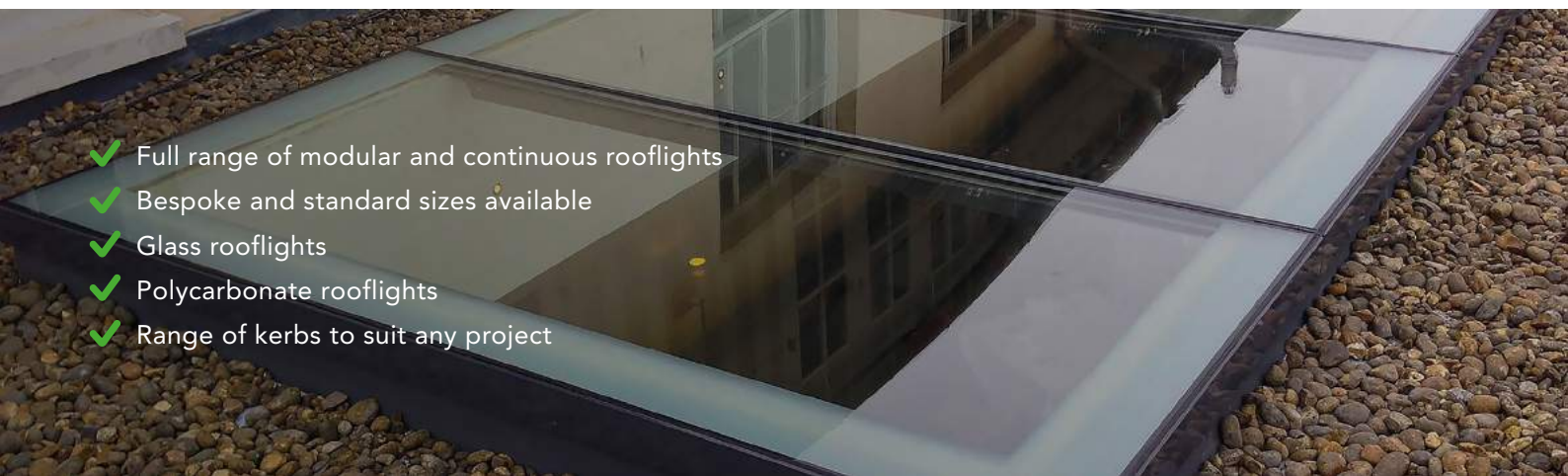


## **BRETT MARTIN NEW GLASS RANGE** 750 X 750 + UPSTAND

Our **Brett Martin range of rooflights** are intended for easy installation on all modern building types. They provide natural smoke and heat exhausts as well as secure ventilation. Fully tested they meet the standards for security, non-fragility and fire safety.



- ✓ Full range of modular and continuous rooflights
- ✓ Bespoke and standard sizes available
- ✓ Glass rooflights
- ✓ Polycarbonate rooflights
- ✓ Range of kerbs to suit any project



# Flat Roofing Insulation

With increasing emphasis being placed on the UK becoming a greener, energy efficient nation, the demand for insulation, which can help property owners cut their energy bills, is on the rise.

## Flat roofing insulation uses:

- ✓ Warm roofs
- ✓ Cold roofs
- ✓ Inverted roofs
- ✓ Upside down roofs
- ✓ Full adhered or mechanically fixed
- ✓ Tapered / cut to falls schemes



Did you know that if you are removing 25% or more of a flat roof build up you need to comply with Part L building regulations?

This means you have to make every effort to bring it up to the standard of a new build roof, which currently stands at minimum 120mm on insulation.

**We supply thousands of square meters of insulation each year**, stocking the material in our warehouse – meaning you can quickly get your hands on it on demand.

Depending on the size of the job, we may even be able to supply directly to site.

So, now you know who to call for your next insulation project.

## ISOGARD HD Cover Board

Firestone ISOGARD HD is a 12.7mm thick Polyisocyanurate board designed for use as a cover board. It is a high-density, closed-cell, Polyiso foam core that has been manufactured with a coated fiberglass facer.







## Lightweight roofing system - metal roof tile

Smooth flowing curves for a timeless appeal.

The quality of Tilcor's textured- finished Bond tile is superb and we see it as an up-and-coming pitch roof solution for the future.

Metal roof tiles are already being used in conservatory roof conversions, by housing associations, and on commercial roofing projects and modular holiday park homes.

This is because they are considerably quicker to install and are lighter than concrete and clay tiles, which makes them so much more roofer-friendly.

Tilcor's Bond captures the refined look of a traditional-style roofing tile while incorporating the lightweight advantages of steel.

All Tilcor's roofing products are fabricated from Zincalume® protected steel.

Tilcor's textured finish provides added protection by embedding natural stone granules in an acrylic base coat. A final clear acrylic over-glaze is applied before it is oven cured.

This extremely durable UV-resistant coating enables Tilcor roofing products to withstand the harshest environments around the world – which is backed up by the additional benefits of a **50-year warranty**.

## Bond Textured Specifications

Length of Cover	1265mm
Width of Cover	368mm
Tiles / m <sup>2</sup>	2.15 / m <sup>2</sup>
Weight / Tile	2.90kg
Weight / m <sup>2</sup>	6.30kg
Minimum Roof Pitch	12.5°

### Here are some of the unique selling points of this product:

Wind-tested to 100mph

Suitable for roof pitches as  
low as 12.5 degrees

30% quicker to install than traditional  
tiles (watch the video we have on this)

50-year guarantee and BBA accredited

Maintenance-free roof tile for the life of  
the tile – simply 'fit and forget'

Non-combustible

100% recyclable

High impact resistance

Traditional appearance with a  
stone-coated finish

Less than 7kg per m<sup>2</sup>

Manufactured from the highest-quality  
New Zealand steel. Its base component  
is iron sand from the coasts of New  
Zealand, which contains 50% iron ore,  
producing very pure and high-grade steel

# Our Expertise

Permaroof UK Ltd offer a design specification service of commercial roofing using the proven and durable rubber flat roofing solutions. Whether you're in the early stages of specifying your commercial roofing project or you're ready to get started, **Permaroof can help you to find the best solutions for your needs.**

As a leading supplier for commercial roofing, we have experience with roofing projects of all sizes and can help our clients with a range of systems from newbuild construction to repairs and complete roof refurbishment.

Our teams are experienced in the design and specification of commercial roofing systems and our approach to customer service is award-winning. We work closely with our commercial clients to ensure your roofing solution fits your needs perfectly, talk to us today.



## Full Specifications Support to Include:

- ✓ On site meetings to ascertain direction of project
- ✓ Full Firestone technical assistance
- ✓ Roof inspections, surveys and reports
- ✓ Firestone approved installer network
- ✓ Wind-up life calculations
- ✓ Core testing with reports
- ✓ Design support and advice
- ✓ Roof sign offs for warranties
- ✓ Cut to falls insulation
- ✓ NBS specifications

As well as offering our customers access to some of the most innovative products on the market, our team of experts is here to support you with solutions and practical advice for all aspects of your project.





# From Consultation to Completion – How Permaroof Can Help With CIF Submissions

The **Condition Improvement Fund (CIF)** is an annual bidding round offered by the government for academies and sixth form colleges to apply for capital funding, with the objective of identifying buildings in need of repair and ensuring they're safe. It is never too early to prepare for your submission and how suppliers can assist local authorities with the bidding process.

The CIF process begins in September, at the start of the new school year, when it's initially announced. In October, information for applicants is published and online application forms open with a deadline of November for registration and December for submission. It then takes four months for all of the applications to be individually assessed, with successful projects being notified around April time.

## Who can apply for CIF funding?

CIF funding is not available to every single school across the country as there are certain criteria that must be met. To be eligible, the educational establishment must be one of the following:

- Sixth-form colleges;
- Single academy trusts;
- Small multi-academy trusts (MATs) with less than five academies; or,
- Eligible voluntary aided (VA) schools

Every project application is scored against three assessment criteria, all of which have slightly different weighting. Project need contributes to the majority of the score at 60%, followed by project cost and 25%, with the remaining 15% being scored against project planning.

## Carrying out surveys

The first step in any potential flat roofing project is to investigate the condition of the roof and conduct a survey to find improvements that are required to bring it back up to regulations – from checking thermal regulation and the fall of water discharge, to structural soundness and whether there are enough outlets.

## Arranging quotes and guaranteeing warranties

Once the survey has been completed and next steps have been identified, it is time to get a quote for the work that needs to be carried out, which can support your CIF application as it evidences exactly how the funding will be utilised.

At Permaroof, we have access to a national network of registered installers who will be able to provide a quote for the project, with full project and technical support and warranties assured. All our contractors are fully trained and have learned the correct method of installing our flagship system – Firestone RubberGard single ply EPDM but also and including a range of other flat roofing waterproofing systems that come with a range of warranties as standard.

## Collating the findings

Once the full roof survey has been completed, the report written and full quotes arranged, it is time to collate the findings into a report to be submitted to the CIF as part of the application stage in that October to December window. What is worth bearing in mind is that every case is unique and has its own timeline – there is no one size fits all. Funding can either happen quickly or it can take up to two years.

## Bringing in the experts

Therefore, it is in everyone's best interests to ensure the buildings themselves are maintained to the highest possible standard – and CIF funding is one of the options available that helps to contribute towards this. Speaking from previous experience, it is essential to make sure that eligible schools and academies submit their CIF bids as early as possible, and by September or October at the latest, to ensure they give themselves the best chance of securing necessary funding.

Whether contractors and suppliers are brought in to assist with a reactive issue (for example, a leaky roof that has suddenly developed) or a proactive approach (such as a full roof overlay), ensuring you're getting a comprehensive service that offers a guiding hand from initial consultation through to tender and final sign off means academies and sixth form colleges can focus on educating the next generation – some of whom could decide to pursue a career in building products.





## Permaroof UK

Unit 1 Westway Cotes Park Industrial Estate,  
Alfreton, DE55 4QJ

☎ 01773 608808

✉ [flatroofing@permaroof.co.uk](mailto:flatroofing@permaroof.co.uk)

🌐 [www.permaroof.co.uk](http://www.permaroof.co.uk)